

INEO



INSTALLATION SYSTEM

LAUFEN



INSTALLATION SYSTEM FOR THE WHOLE BATHROOM

With the INEO installation system, LAUFEN takes its renowned quality and innovation behind the wall. Engineered for easy installation, the system facilitates the effortless assembly of all components without the need for tools and is designed to complement all LAUFEN products. Manufactured in Germany, the INEO system has established a new benchmark for the installation of bathrooms.

Accompanying the INEO system, a broad selection of flush plates which are not only easy to install, but also enhance the bathroom aesthetic with a variety of designs, colours and premium finishes to suit all bathroom styles.



INEO makes installation easy for both new buildings and renovations: INEOLINK, with all necessary connections, is available for wet and solid construction while the self-supporting lightweight stud wall INEOGRID brings all components together with stability and reliability in drywall bathroom scenarios.

The advantages are clear: installers can plan significantly shorter installation times thanks to a fully integrated system made of prefabricated, precisely coordinated components which can be adapted to meet even the most complex project requirements. Architects and bathroom planners can also significantly reduce their planning effort with the entire bathroom being procured from a single source. The prefabricated components, manufactured in Germany, offer a high level of industrial quality and compliance with all soundproofing, drinking water and hygiene regulations.





FLUSH PLATES

INEO flush plates, available in a range of materials, colours and finishes, combine easily with the INEOLINK toilet and urinal elements. Options for electronic or infrared-controlled operation are also available for a more hygienic solution with their touch-free control. Utilising smart, flexible cable technology alongside the quick-release mechanism, makes installation of the INEO flush plates simple and quick.





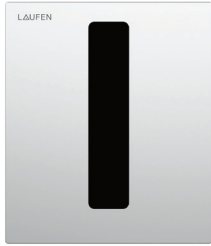
INEO AIR



INEO MOONDANCE



INEO SUNRISE



INEO E-AU105

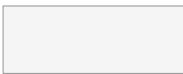


INEO AU101



INEO AU109

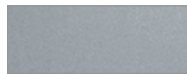
COLOURS FLUSH PLATES WC



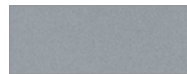
.000
White gloss ABS



.716
Black mat paint



.004
Chrome



.007
Chrome mat paint



.001
PVD gold gloss



.165
PVD pale gold mat



.162
PVD gold rosé



.161
PVD Inox brushed look



.163
PVD black mat titanium



.194
White cover with
PVD Inox brushed
look buttons



.193
White cover with
PVD chromed
buttons



.124
Black cover with
PVD Inox brushed
look buttons

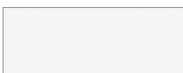


.123
Black cover with
PVD chromed
buttons



.125
Black cover with
PVD gold gloss
buttons

COLOURS FLUSH PLATES URINAL



.000
White



.716
Black mat paint



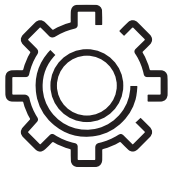
.928
Stainless steel
brushed

BENEFITS



EASY INSTALLATION WITH QUICK RELEASE TECHNOLOGY

Cable technology and quick-release fixings enable a tool-free installation process, with each connection intuitively labelled. The mechanical flush activation system is engineered for enduring performance and maintenance-free use, and even allows for adjustments while the flush plate is not fully installed.



DIRECT INSPECTION OPENING

The compact inspection opening offers easy maintenance of the cistern with the flush flow regulator, filling valve, drain valve and water inlet easily accessible directly behind the elegant flush plate.

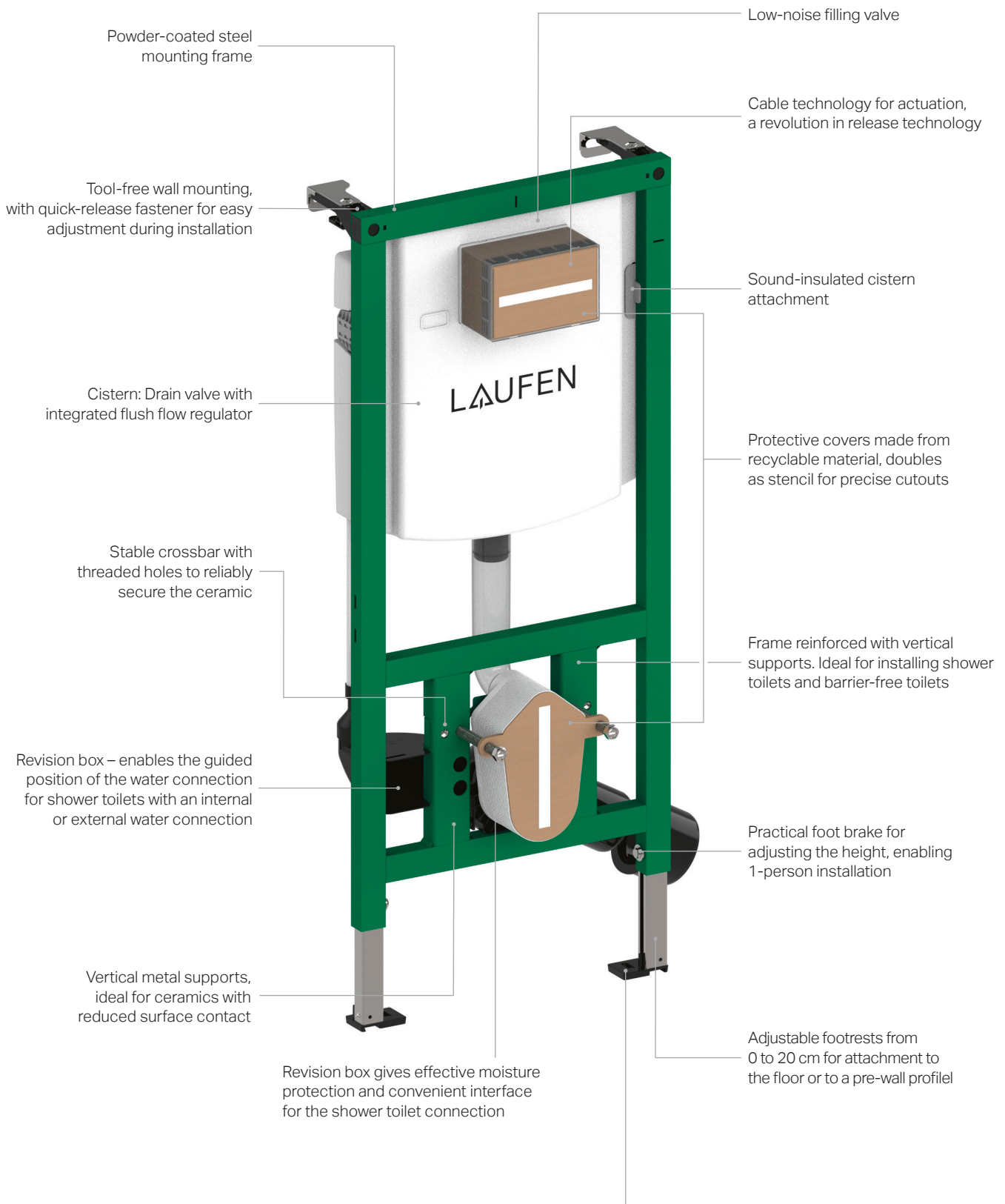


DESIGN LED SOLUTIONS

The diverse collection of shapes and colours seamlessly combine with LAUFEN collections, to ensure a cohesive bathroom aesthetic.

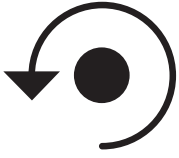


INEOLINK



Compatible with standard profile systems

BENEFITS



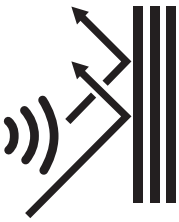
EXTENSIVE RANGE OF SOLUTIONS

INEO provides solutions designed for both efficiency in planning and adaptability in design, offering the perfect balance of flexibility and prefabrication for any bathroom project. Capable of handling standard requirements as well as more complex construction scenarios, the INEO range ensures every need is met with ease while offering the highest standard of industrial quality, compliance, and technical compatibility.



QUICK ASSEMBLY & ADJUSTMENT

INEO is designed for seamless, time-efficient integration across diverse construction scenarios. Its components feature innovative functions that simplify assembly and adjustment for installers, reducing the likelihood of errors.



CUSTOMISED SOUND PROTECTION

Given the unique nature of each construction project, sound insulation solutions should be strategically planned, combining different initiatives, to meet building regulations effectively. This approach demands meticulous planning and execution. The INEO installation systems, featuring a low-noise filling valve and telescopic filling hose, ensure minimal sound during tank refilling, adhering to all legal requirements for sound insulation.



DRINKING WATER STANDARDS COMPLIANT

Hygienically clean drinking water is an essential commodity therefore, all components of our installation systems are perfectly designed to ensure drinking water quality that complies with all legal standards.



CISTERNS

- The heart of the toilet elements, for almost all possible applications
- High functionality and sophisticated technology
- Basic adjustments are possible via the inspection opening
- Water-saving dual flush, with quantity adjustable on the drain valve
- Easy adjustment of the flushing flow regulator from the front – without dismantling the drain valve
- Filling valve, compact design, universally applicable, high flow and extremely quiet
- Easy connection of the flush plate using flexible cable technology and quick-release bolts. No adjustment work required.
- Tested technology, fitting group I, in accordance with the standards
- 20-year procurement guarantee on all spare parts
- INEO FRESH Box incl. 2 tabs

ADVANTAGES OF THE REVOLUTIONARY RELEASE TECHNOLOGY

- Quick and easy installation
- No essential adjustments required
- Easier maintenance & replacement of spare parts
- Fewer technical components require less maintenance
- Tension-free connection between the release mechanism and the outlet valve requires less maintenance
- Structural abnormalities have no influence on the release mechanism. Thanks to cable technology, the distances are not important.

TOILET, BIDET AND SHOWER TOILET ELEMENTS

- Installation in front of solid walls, in lightweight construction and timber stud walls or INEOGRID profile system
- Toilet elements in different heights (1120, 980, 820 mm)
- «SLIM» toilet option for low installation depth
- Small inspection opening during operation (from the front). With 980 and 820 mm elements operation can be selected from the front or from above without additional accessories
- Pre-assembled elements including connection set for toilet, Ø 90 mm
- Concealed cistern with water-saving dual flush, adjustable flush volume
- Adjustable purge flow regulator
- Stable, self-supporting construction with 4 attachment points
- Toilet and bidet elements can hold up to 400 kg
- Quick-release wall mounting for tool-free fine adjustment during assembly, enables 1-person assembly
- Self-locking feet with adjustable footplates
- Various U-profiles suitable for installation
- Steel powder-coated frame



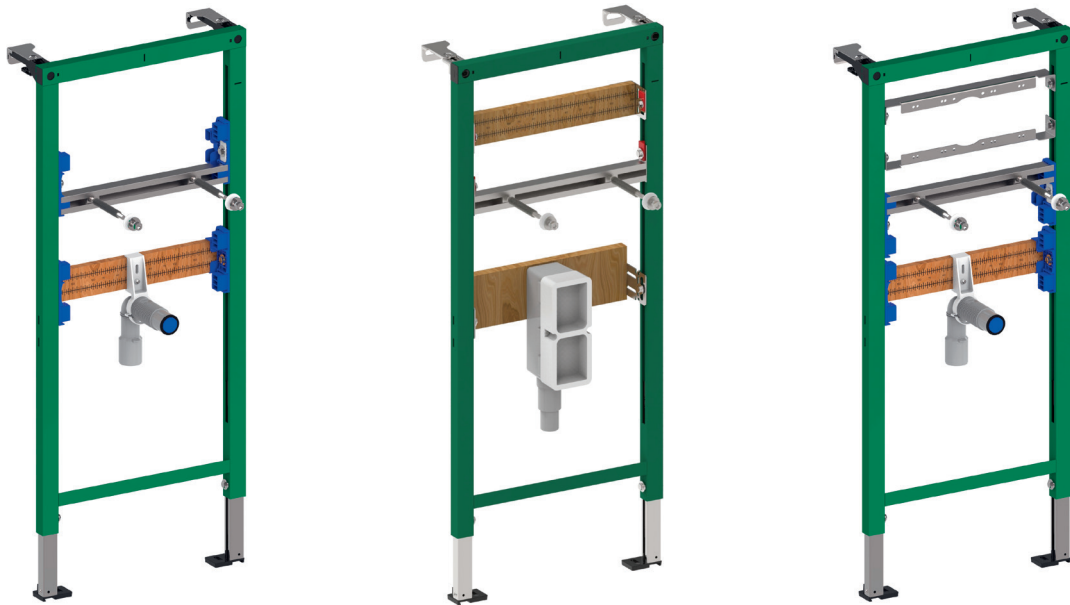
- Connection box for shower toilets and electronic flush activation
- Easy installation of water and electrical connections
- Suitable for mounting most standard shower toilets
- Vertical support for a secure hold





WASHBASIN ELEMENTS

- For standard basin mixers or wall mounted faucets
- Horizontal supports can be adjusted variably, all horizontal supports are self-locking and equipped with braking mechanism
- Plywood board with incremental scale for free positioning of drinking water pipe system, wall panels included in the barrier-free element
- Also available with concealed siphon for accessible wash basins and barrier-free construction
- Washbasin elements can support up to 150 kg



- Sliding bracket for easy height adjustment of the horizontal supports and better sound decoupling
- Possibility to insert a horizontal support (C-profile) for additional security



- 1/2" wall duct, compatible with most common pipe systems
- Sound-insulated pipe clamp



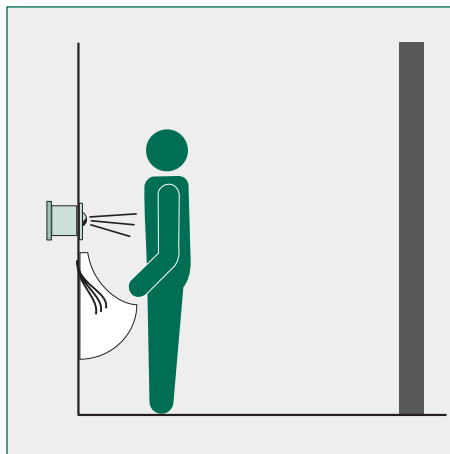
URINAL ELEMENTS

- Standard elements height – 1120 mm, special height available for urinals with lids – 1320 mm
- Universally adjustable to various ceramic urinals
- Urinal concealed box with completely serviceable water system, including pre-shut off and filter (including factory leak test)
- Parameter setting via maintenance and service remote control
- Mechanical flush activation: hand-operated, pneumatic cartridge valve with high-quality urinal flush plate (various designs, materials, colours and installation options)
- Electronic flushing trigger: Touch-free, infrared sensor-controlled flush with 6V DC cartridge solenoid valve (battery, mains or series systems possible)
- Waterless: for urinals without flush control
- Urinal elements can hold up to 150 kg

Manual operation, mechanical



Infrared



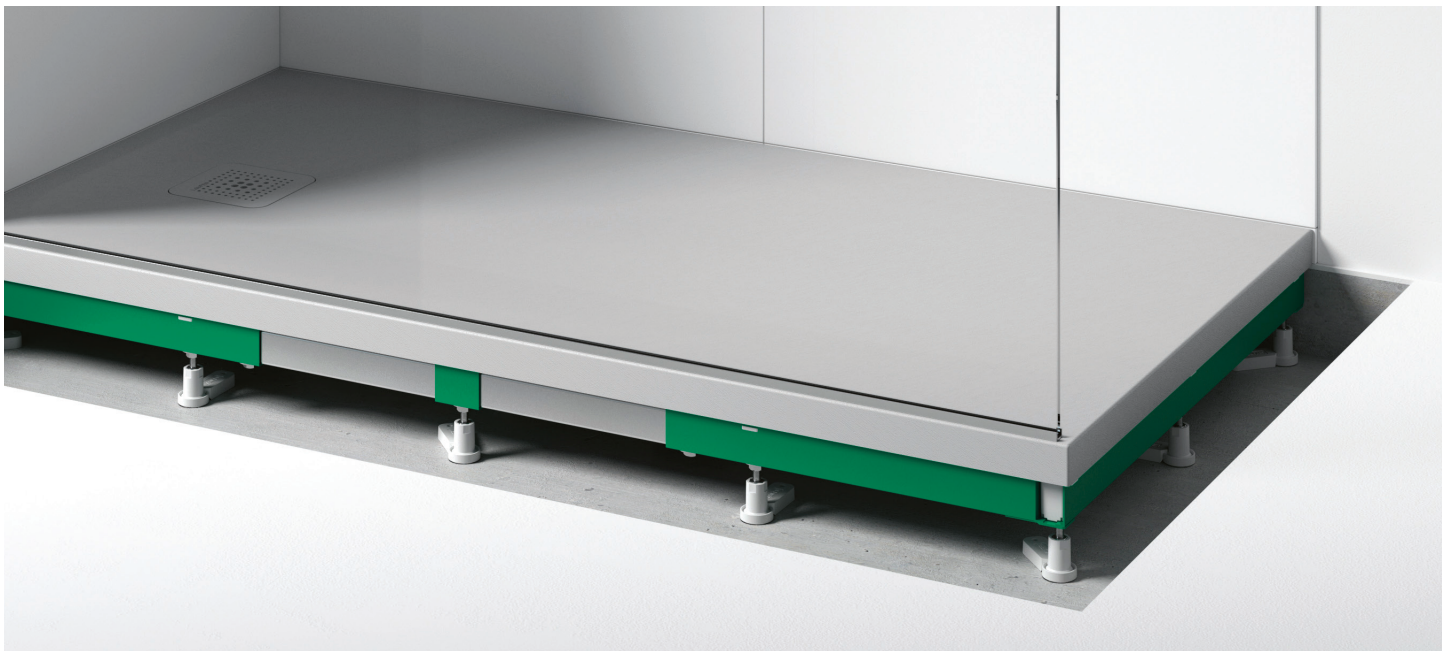
Integrated



SHOWER TRAY ELEMENT

Complete system solution with LAUFEN PRO, LAUFEN PRO S and SOLUTIONS Marbond shower trays

- Adjustable installation frame
- Installation lengths are adjustable, depending on the defined frame width
- Sound insulation sets for installation in accordance with SIA 181 and DIN 4109, optional
- Reinforced, robust frame
- Frame pre-assembled to save time during installation
- Easily adjustable using the same technology found in toilet elements



WALL OUTLET UNIT

The INEOLINK wall outlet unit is an essential element for the NIA shower tray, providing a seamless water flow into the wall with an impressive drainage performance of 48 L/min. It can be easily installed, with or without frame, integrating water sealing and aerosol extraction nozzle* for extra hygiene and a high quality, durable finish.

*when connected with building ventilation

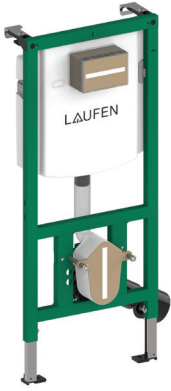




THE BARRIER-FREE BATHROOM

- Washbasin element suitable for barrier-free use including wall-mounted odour trap, height-adjustable DN 50/DN 40
- Ready-made kit with 1 1/4" drain valve, chrome-plated brass drain elbow and cover available in white, chrome or stainless steel
- Panels for support rails in waterproof, multi-glued plywood
- Universally height adjustable, right and left version
- Toilet element for barrier-free toilet attachment, 50 mm higher than standard element
- For barrier-free construction according to, though not limited by, DIN 18040 and SIA 500
- Mains operation or battery operation can be retrofitted, flush can be electronic with a remote button, mechanical, pneumatic or completely touch-free
- Reinforced frame





Installation element with cistern for wall-mounted toilet

H920114000001

1120 × 500 × 135 mm

Steel frame for drywall

For mounting in metal or wood stud walls or for pre-wall installation

Shower toilet compatible

Adjustable feet; by height and rotation

Cistern with adjustable flushing flow regulator according to EN 14055

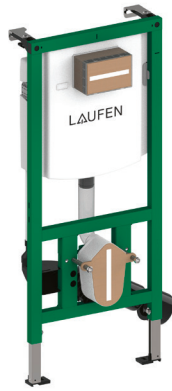
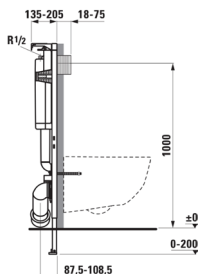
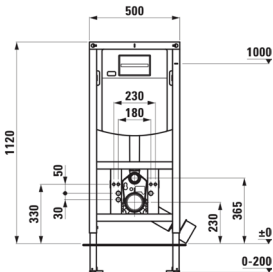
completely pre-assembled, for front operation, with dual flush

Top water connection R AG 1/2", brass with connection box for shower toilet and electronic flush plates

with support for WC with reduced surface contact

Installation depth 135–205 mm, adjustable without tools

max. load capacity 400 kg



Installation element with cistern for wall-mounted toilet and shower toilet

H920115000001

1120 × 500 × 135 mm

Steel frame for drywall

For mounting in metal or wood stud walls or for pre-wall installation

Shower toilet compatible

Adjustable feet; by height and rotation

Cistern with adjustable flushing flow regulator according to EN 14055

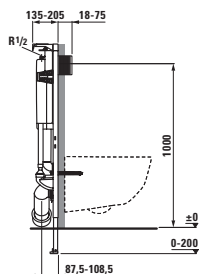
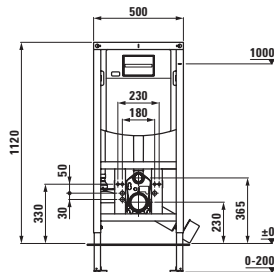
completely pre-assembled, for front operation, with dual flush

Top water connection R AG 1/2", brass with connection box for shower toilet and electronic flush plates

with support for WC with reduced surface contact

Installation depth 135–205 mm, adjustable without tools

max. load capacity 400 kg



Slim installation element with cistern for wall-mounted toilet and shower toilet

H920110 000 000 1

1155 × 500 × 93 mm

Steel frame for drywall

For mounting in metal or wooden stud walls or pre-wall installation

Shower toilet compatible

Adjustable feet; by height and rotation

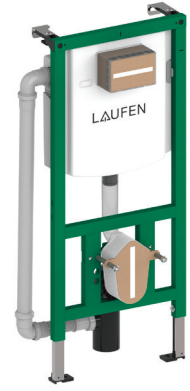
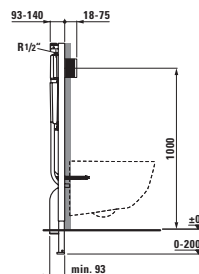
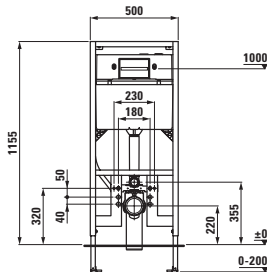
completely pre-assembled, for front operation, with dual flush

Top water connection R AG 1/2", brass with support for WC with reduced surface contact

Empty pipe for shower toilet pre-assembled

Installation depth 93–140 mm

max. load capacity 400 kg



Installation element with cistern and ventilation valve for drain for wall-mounted toilet and shower toilet

H920116 000 000 1

1120 × 590 × 135 mm

Steel frame for drywall

For mounting in metal or wooden stud walls or pre-wall installation

Shower toilet compatibility

(with accessories H8966660000001)

Adjustable feet; by height and rotation

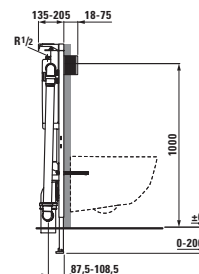
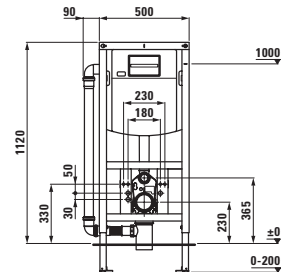
Cistern with adjustable flush flow regulator in accordance with EN 1405

completely pre-assembled, for front operation with dual flush

Top water connection R AG 1/2", brass with support for WC with reduced surface contact

Installation depth 135–205 mm, adjustable without tools

max. load capacity 400 kg





Installation element with cistern and odour extraction connection for wall-mounted toilets and shower toilets

H920118 000 000 1

1120 × 615 × 135 mm

Steel frame for drywall

For mounting in metal or wooden stud walls or pre-wall installation

Shower toilet compatibility (with accessories H8966660000001)

Adjustable feet; by height and rotation

Cistern with adjustable flush flow regulator in accordance with EN 14055 completely pre-assembled, for front operation with dual-flush

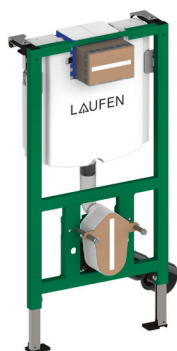
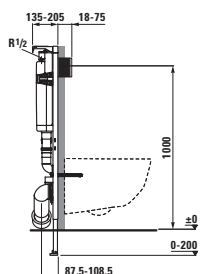
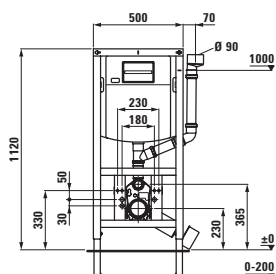
Water connection at the top or side R AG 1/2", brass

with odour extraction connection for building ventilation systems

with support for WC with reduced surface contact

Installation depth 135–205 mm, adjustable without tools

max. load capacity 400 kg



Installation element with cistern for wall-mounted toilet and shower toilet

H927104 000 000 1

980 × 525 × 155 mm

Steel frame for drywall

for mounting in metal or wooden stud walls or pre-wall installation

Shower toilet compatibility (with accessories H8966660000001)

Adjustable feet; by height and rotation

cistern completely pre-assembled, for front operation and operation from above with dual flush

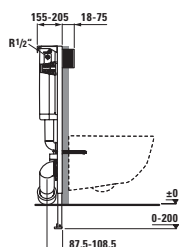
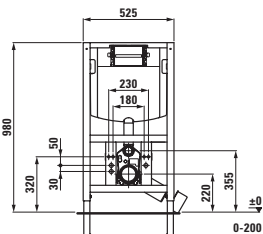
Water connection on the left R AG 1/2", brass

with connection box for shower toilet and electronic flush plates

with support for WC with reduced surface contact

Installation depth 155–205 mm, adjustable without tools

max. load capacity 400 kg



Installation element with cistern for wall-mounted toilet and shower toilet

H927105 000 000 1

820 × 525 × 155 mm

Steel frame for drywall

for mounting in metal or wooden stud walls or pre-wall installation

Shower toilet compatibility (with accessories H8966660000001)

Adjustable feet; by height and rotation

cistern completely pre-assembled, for front operation and operation from above with dual flush

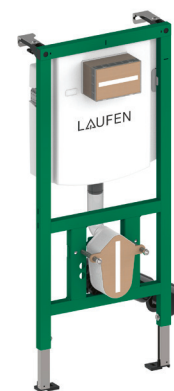
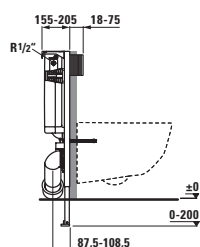
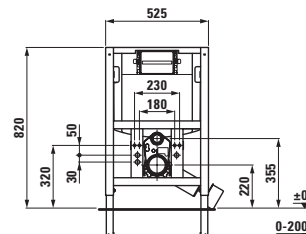
Water connection on the left R AG 1/2", brass

with connection box for shower toilet and electronic flush plates

with support for WC with reduced surface contact

Installation depth 155–205 mm, adjustable without tools

max. load capacity 400 kg



Installation element with cistern for wall-mounted toilet, seat height +50 mm, barrier-free

H920117 000 000 1

1120 × 500 × 135 mm

Steel frame for drywall

for mounting in metal or wooden stud walls or pre-wall installation

Shower toilet compatibility (with accessories H8966660000001)

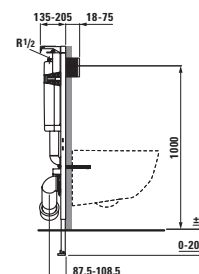
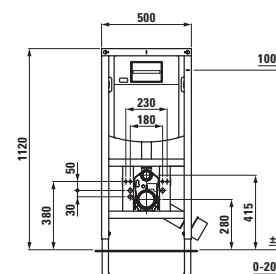
Adjustable feet; by height and rotation

Cistern with adjustable flush flow regulator in accordance with EN 14055 completely pre-assembled, for front operation with dual flush

Top water connection R AG 1/2", brass with support for WC with reduced surface contact

Installation depth 135–205 mm, adjustable without tools

max. load capacity 400 kg



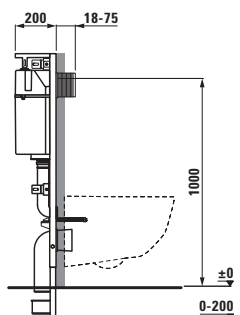
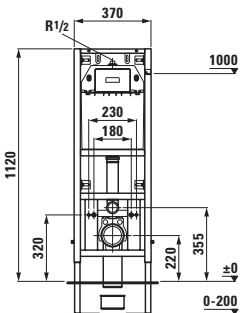


Corner installation element with cistern for wall-mounted toilet

H920119 000 000 1

1120 × 370 × 200 mm

Steel frame for drywall for installation in front of a solid wall
Adjustable feet; by height
completely pre-assembled, for front operation with dual flush
Top water connection R AG 1/2", brass with support for WC with reduced surface contact
Installation depth 200 mm
max. load capacity 400 kg

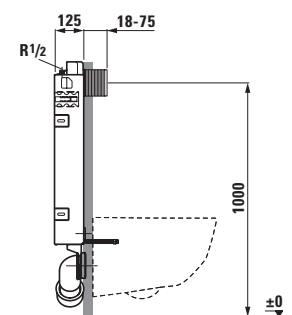
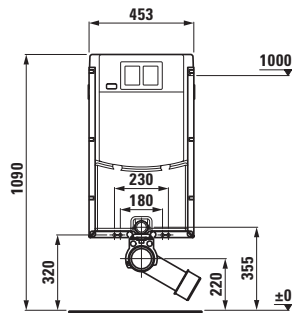


Toilet module with cistern for wall-mounted toilet and shower toilet

H926103 000 000 1

780 × 453 × 125 mm

Steel frames for wet construction for installation in a brick wall in front of a solid wall
completely pre-assembled, for front operation with dual flush
Top water connection R AG 1/2", brass
Installation depth 125 mm
Installation height can be individually adjusted to the toilet model

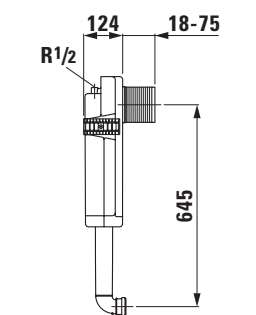
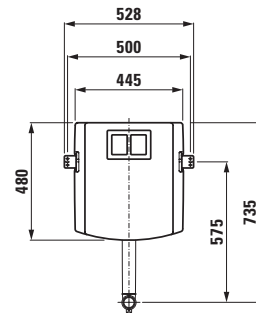


Cistern element for free-standing toilet

H926101 000 000 1

480 × 528 × 124 mm

Steel frames for wet construction for installation in a brick wall in front of a solid wall
Not shower toilet compatible
completely pre-assembled, for front operation with dual flush
Top water connection R AG 1/2", brass
Installation depth 124 mm
Installation height can be individually adjusted to the toilet model

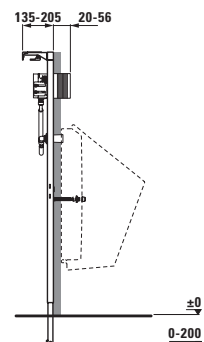
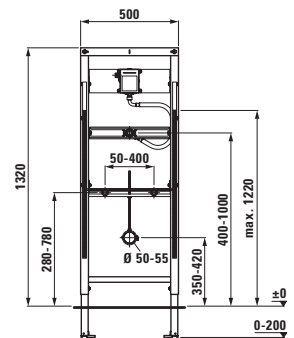


Installation element for urinal without integrated control

H940103 000 000 1

1320 × 500 × 76,5 mm

Steel frame for drywall for mounting in metal or wooden stud walls or pre-wall installation
Water connection on the left R AG 1/2", brass
Adjustable feet; by height and rotation
Installation depth 100–205 mm, adjustable without tools
max. load capacity 150 kg



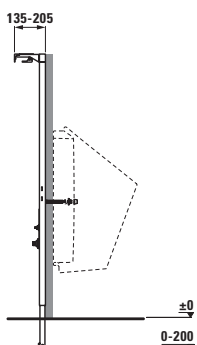
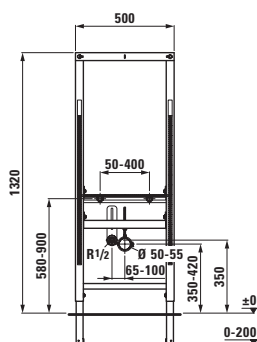


Installation element for urinals with integrated control and waterless urinal

H940104 000 000 1

1320 × 500 × 75 mm

Steel frame for drywall for mounting in metal or wooden stud walls or pre-wall installation
Adjustable feet; by height and rotation
Installation depth 135–205 mm, adjustable without tools
max. load capacity 150 kg

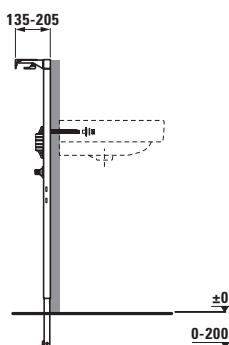
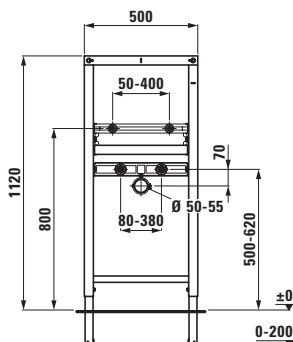


Installation element for washbasins with wall mounted faucets

H910117 000 000 1

1120 × 500 × 75 mm

Steel frame for drywall for mounting in metal or wooden stud walls or pre-wall installation
Adjustable feet; by height and rotation
Installation depth 135–205 mm, adjustable without tools
max. load capacity 150 kg

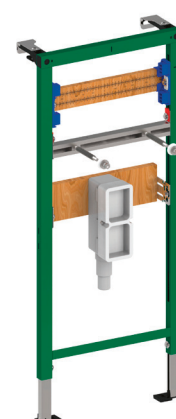
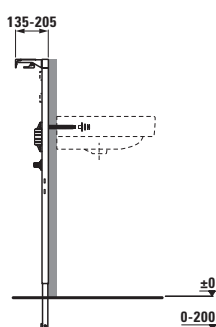
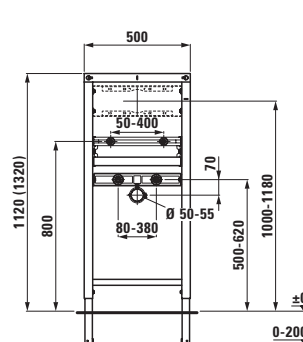


Installation element for washbasins

H910118 000 000 1

1120–1320 × 500 × 75 mm

Steel frame for drywall for mounting in metal or wooden stud walls or pre-wall installation
Adjustable feet; by height and rotation
Installation depth 135–205 mm, adjustable without tools
max. load capacity 150 kg

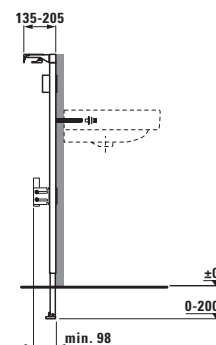
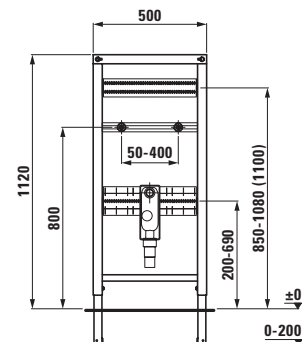


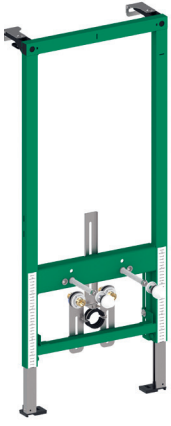
Installation element for wash basins with concealed siphon

H910104 000 000 1

1120 × 500 × 98 mm

Steel frame for drywall for mounting in metal or wooden stud walls or pre-wall installation
for the construction of barrier-free washbasin systems
Adjustable feet; by height and rotation
Installation depth 135–205 mm, adjustable without tools
max. load capacity 150 kg





Installation element for wall bidets

H910116 000 000 1

1120 × 500 × 100 mm

Steel frame for drywall

for mounting in metal or wooden stud walls or pre-wall installation

Adjustable feet; by height and rotation

With support for ceramics with reduced surface contact

Installation depth 135–205 mm, adjustable without tools

max. load capacity 400 kg



Installation frame, for LAUFEN PRO and SOLUTIONS shower trays

Hight 85–175 mm

H295702 000 000 1
Width 700 mm
Length 600–1000 mm

H295701 000 000 1
Width 700 mm
Length 1000–1400 mm

H295700 000 000 1
Width 700 mm
Length 1400–1800 mm

H295703 000 000 1
Width 750 mm
Length 1400–1800 mm

H295706 000 000 1
Width 800 mm
Length 600–1000 mm

H295705 000 000 1
Width 800 mm
Length 1000–1400 mm

H295704 000 000 1
Width 800 mm
Length 1400–1800 mm

H295710 000 000 1
Width 900 mm
Length 600–1000 mm

H295709 000 000 1
Width 900 mm
Length 1000–1400 mm

H295707 000 000 1
Width 900 mm
Length 1800–2200 mm

Installation frame, for LAUFEN PRO and SOLUTIONS shower trays

Hight 85–175 mm

H295713 000 000 1
Width 1000 mm
Length 1000–1400 mm

H295712 000 000 1
Width 1000 mm
Length 1400–1800 mm

H295711 000 000 1
Width 1000 mm
Length 1800–2200 mm

H295714 000 000 1
Width 1200 mm
Length 1000–1400 mm

H295715 000 000 1
Width 1400 mm
Length 1200–1600 mm

H295716 000 000 1
Width 1500 mm
Length 1200–1600 mm

Installation frame, for LAUFEN PRO S shower trays

Hight 85–175 mm

H295717 000 000 1
Width 750 mm
Length 1400–1800 mm

H295719 000 000 1
Width 800 mm
Length 1000–1400 mm

H295718 000 000 1
Width 800 mm
Length 1400–1800 mm

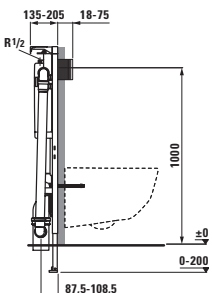
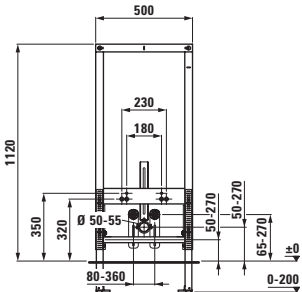
H295724 000 000 1
Width 800 mm
Length 1800–2200 mm

H295722 000 000 1
Width 900 mm
Length 600–1000 mm

H295721 000 000 1
Width 900 mm
Length 1000–1400 mm

95720 000 000 1
Width 900 mm
Length 1400–1800 mm

H295723 000 000 1
Width 1000 mm
Length 1800–2200 mm





INEOLINK
wall outlet unit with frame

H291031 000 000 1

500 × 133 × 620 mm



INEOLINK
wall outlet unit without frame

H291032 000 000 1

405 × 133 × 230 mm



Wood element for support handles

H892667 000 000 1

1120 × 294 × 48/135 mm

for mounting on the left side of the
INEO installation element

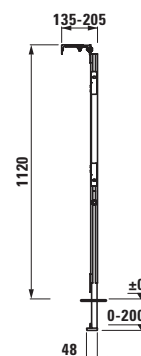
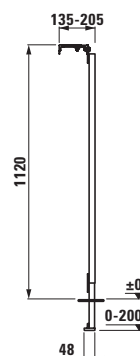
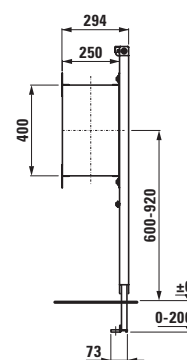
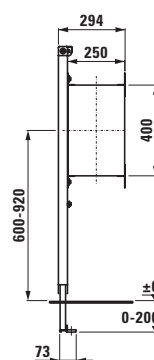


Wood element for support handles

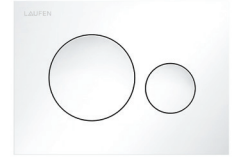
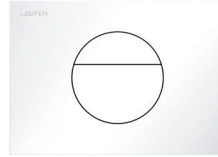
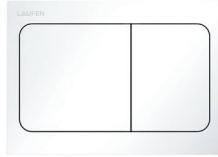
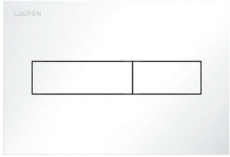
H892668 000 000 1

1120 × 294 × 48/135 mm

for mounting on the right side of the
INEO installation element



INEO



INEO HORIZON
Flush Plate, plastic

H900111 ... 000 1

213 × 145 × 6 mm

000 716 004 007

for front operation or operation
from above
for concealed cistern with dual flush

INEO AIR
Flush Plate, plastic

H900113 ... 000 1

203 × 145 × 6 mm

000 716 004 007

suitable for flush installation*
with front operation or operation
from above
for concealed cistern with dual flush

INEO SUNRISE
Flush Plate, plastic

H900112 ... 000 1

203 × 145 × 6 mm

000 716 004 007

suitable for flush installation*
with front operation or operation
from above
for concealed cistern with dual flush

INEO MOON
Flush Plate, plastic

H900114 ... 000 1

203 × 145 × 6 mm

000 716 004 007

suitable for flush installation*
with front operation or operation
from above
for concealed cistern with dual flush

*** Frame for flush installation**

H975155 000 000 1

203 × 145 mm

*** Frame for flush installation**

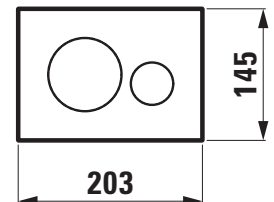
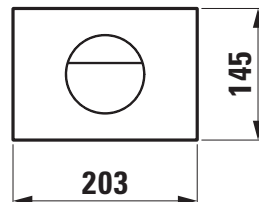
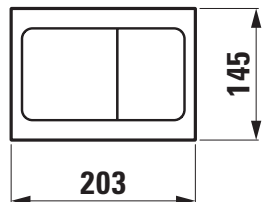
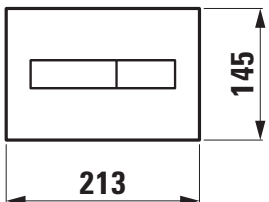
H975155 000 000 1

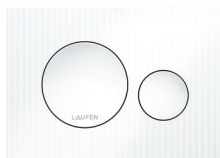
203 × 145 mm

*** Frame for flush installation**

H975155 000 000 1

203 × 145 mm





INEO MOONDANCE
Flush Plate, plastic

H900116 ... 000 1

203 × 145 × 6 mm

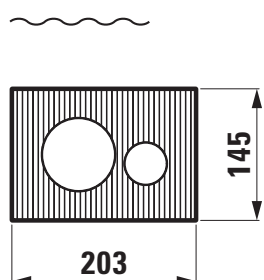
000 716 004 007

suitable for flush installation*
with front operation or operation
from above
for concealed cistern with dual flush

*** Frame for flush installation**

H975155 000 000 1

203 × 145 mm



INEO GROOVE
Flush Plate, plastic

H900117 ... 000 1

203 × 145 × 6 mm

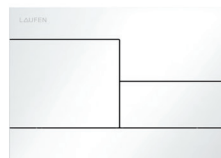
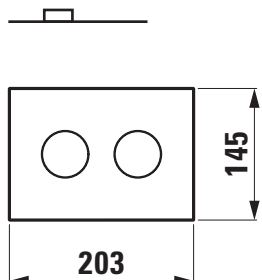
000 716 004 007

suitable for flush installation*
with front operation or operation
from above
for concealed cistern with dual flush

*** Frame for flush installation**

H975155 000 000 1

203 × 145 mm



INEO SKYLINE
Flush Plate, plastic

H900118 ... 000 1

208 × 148 × 6 mm

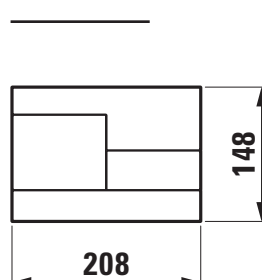
000 716 004 007

suitable for flush installation*
with front operation or operation
from above
for concealed cistern with dual flush

*** Frame for flush installation**

H975154 000 000 1

208 × 148 mm





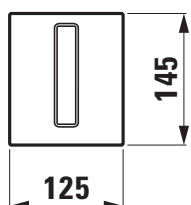
INEO AU101
Urinal Flush plate, plastic

H909101 ... 000

125 x 145 x 10 mm

000 716

for concealed urinal flushing
with pneumatic urinal cartridge valve
with cartridge filter screen
with chrome-plated trim



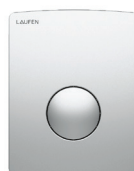
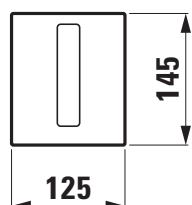
INEO AU103
Urinal Flush plate, stainless steel

H909103 928 000

125 x 145 x 10 mm

928

for concealed urinal flushing
with pneumatic urinal cartridge valve
with cartridge filter screen



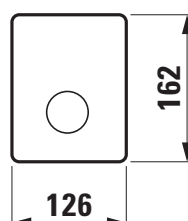
INEO AU109
Urinal Flush plate, plastic

H909109 000 000

126 x 162 x 17 mm

000 928

for concealed urinal flushing
with pneumatic urinal cartridge valve
with cartridge filter screen





INEO E-AU104

Urinal Flush plate, plastic

H909104 000 000

125 x 145 x 10 mm

000

Final assembly set with infrared control

Mains version 230/6V

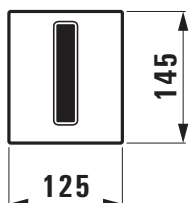
for cartridge valve technology

Sensor range approx. 0.5 m

Minimum distance to the opposite wall 0.9 m

Adjustable settings including user detection, flush duration and dynamic flush

Not suitable for urinals with lids



INEO E-AU105

Urinal Flush Plate, stainless steel

H909105 928 000

125 x 145 x 10 mm

928

Final assembly set with infrared control

Mains version 230/6V

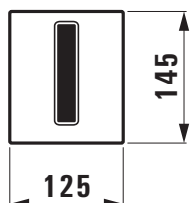
for cartridge valve technology

Sensor range approx. 0.5 m

Minimum distance to the opposite wall 0.9 m

Adjustable settings including user detection, flush duration and dynamic flush

Not suitable for urinals with lids



INEO E-AU110

Urinal Flush plate, plastic

H909110 ... 000

126 x 162 x 17 mm

000

928

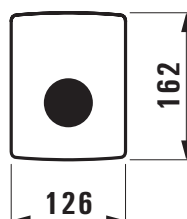
Final assembly set with infrared control

for cartridge valve technology

Sensor range approx. 0.5 m

Minimum distance to the opposite wall 0.9 m

Not suitable for urinals with lids



INEO E-AU111

Urinal Flush plate, plastic

H909111 ... 000

126 x 162 x 17 mm

000

928

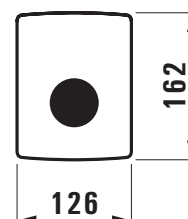
Final assembly set with infrared control

for cartridge valve technology

Sensor range approx. 0.5 m

Minimum distance to the opposite wall 0.9 m

Not suitable for urinals with lids





www.laufen.com



LAUFEN Bathrooms AG
Wahlenstrasse 46, 4242 Laufen
Switzerland
Tel. +41 61 765 71 11
feedback@laufen.ch