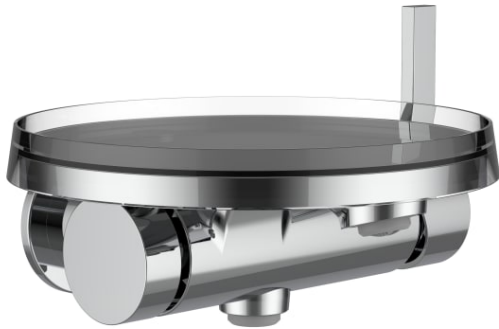


## KARTELL LAUFEN

Bath mixer for Simibox 1-Point, projection 170 mm, with synthetic flexible hose 1800 mm, with handspray TwinStick, with disc bowl transparent crystal (bowl available in 7 further colours)

### DIMENSIONS

|        |      |
|--------|------|
| Length | 1 mm |
| Width  | 1 mm |
| Height | 1 mm |



Acoustic level (dB) : Group 1 (Up to 20 dB)

Aerator type : Coin slot

Application : Bath

Cartridge features : Flow brake,  
Temperature brake

Check valve

Commodity Code/Import Code Number for  
Foreign Trad : 84818011

Diverter : Automatic

Faucet type : Single-lever

Fixed spout

Flow rate (l/min - 3 bar) : 20

Handle position : Lateral

Installation type : Wall-mounted

Net weight (kg) : 3.31

Spout position : Central

Type of cartridge : Ceramic Disc

Water and energy-saving

Water connection diameter : 1/2"