



**PRO S**

**Washbasin**

**DIMENSIONS**

Length	700 mm
Width	465 mm
Height	95 mm

**COLOURS AND FINISHES**

000 White

**#option**

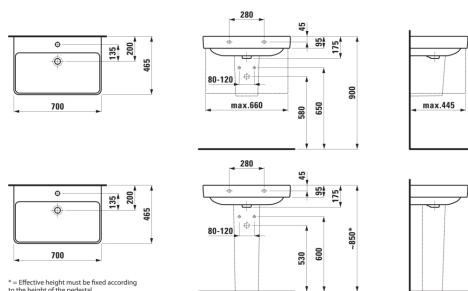
104 - one tap hole, centre

#mountingAccessoriesExcluded\_text

Mounting set M10 x 140 mm, order no. 899882

Bowl length (mm) : 680	Installation type : Vanity, Wall-hung	Overflow type : Standard
Bowl position : Central	Internal Shape : Square	Shape : Rectangular
Bowl width (mm) : 310	Material : Ceramics	Taphole configuration : 1 taphole in the middle
Commodity Code/Import Code Number for Foreign Trad : 69101000	Net weight (kg) : 18	
Glazed base	Number of fixing points : 2	

**TECHNICAL DRAWINGS**



## COMPATIBLE WITH



Vanity unit, 1 drawer,  
matches washbasin  
H810967

**H483451096...1**



Vanity unit, 1 drawer and  
interior drawer, incl.  
drawer organiser,  
matches washbasin  
H810967

**H483452096...1**



Vanity unit, 2 drawers,  
matches washbasin  
H810967

**H402332110...1**



Vanity unit, 2 drawers,  
matches washbasin PRO  
S H810967 / PRO X  
H810865

**H411292108...1**



Vanity unit, 2 drawers,  
matches washbasin PRO  
S H810967 / PRO X  
H810865

**H411512109...1**





## PRO S

With great sensitivity, designer Peter Wirz of Vetica Design has evolved the LAUFEN PRO concept into a slimmer, more geometric form. Defined by precise radii and a light silhouette, LAUFEN PRO S unites elegance with everyday functionality, bringing premium design within reach while combining effortlessly with existing pieces from the LAUFEN PRO collection.

