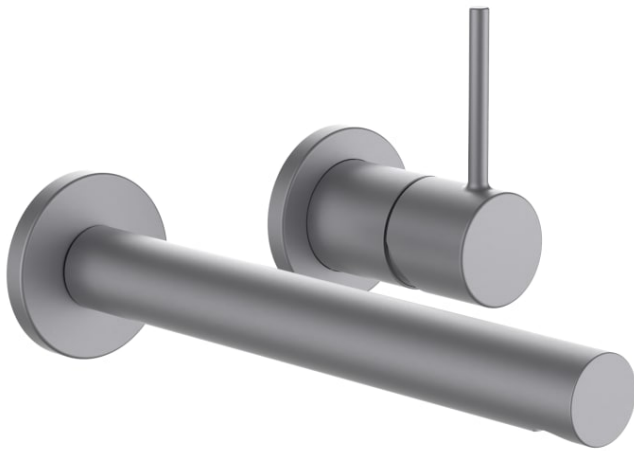


TWINPLUS SLIM

Wall-mounted mixer for Simibox 2-Point,
projection 195 mm, fixed spout, PVD inox look



DIMENSIONS

Length	1 mm
Width	1 mm
Height	1 mm

Acoustic level (dB) : Group 1 (Up to 20 dB)

Aerator type : Honeycomb PCA

Annual energy consumption (kWh/p.a.) :
361.46

Application : Basin

Commodity Code/Import Code Number for
Foreign Trad : 84818019

Faucet type : Single-lever

Fixed spout

Flow rate (l/min - 3 bar) : 5.4

Handle position : Lateral

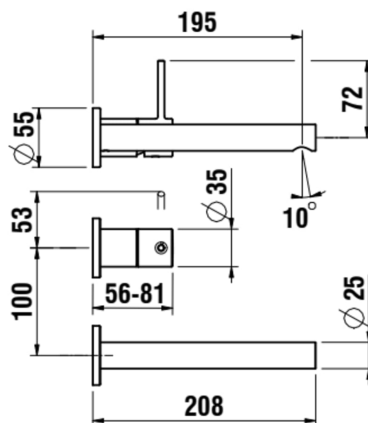
Installation type : Wall-mounted

Net weight (kg) : 0.94

Spout position : Central

Type of cartridge : Ceramic Disc

TECHNICAL DRAWINGS

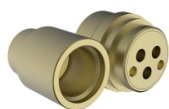


COMPATIBLE WITH



Fixing rail set

HF529050941000



Extension

HF530023000000



Concealed box, suitable for The New Classic, Kartell • Laufen, Twinplus Slim, Meda, Cityplus, Swisstap and Pure, fittings 1/2", lever on the right

HF574049000000

TWINPLUS SLIM

An evolution of excellence, TWINPLUS SLIM refines the acclaimed TWINPLUS with a slimmer, more elegant design and enhanced technology. With its flowing lines and streamlined design, it makes a stylish statement in any modern bathroom.

